
The CompEpi UIHC DB Model

Alberto Maria Segre
Department of Computer Science
The University of Iowa
Iowa City, IA 52246
alberto-segre@uiowa.edu
<http://compepi.cs.uiowa.edu/>

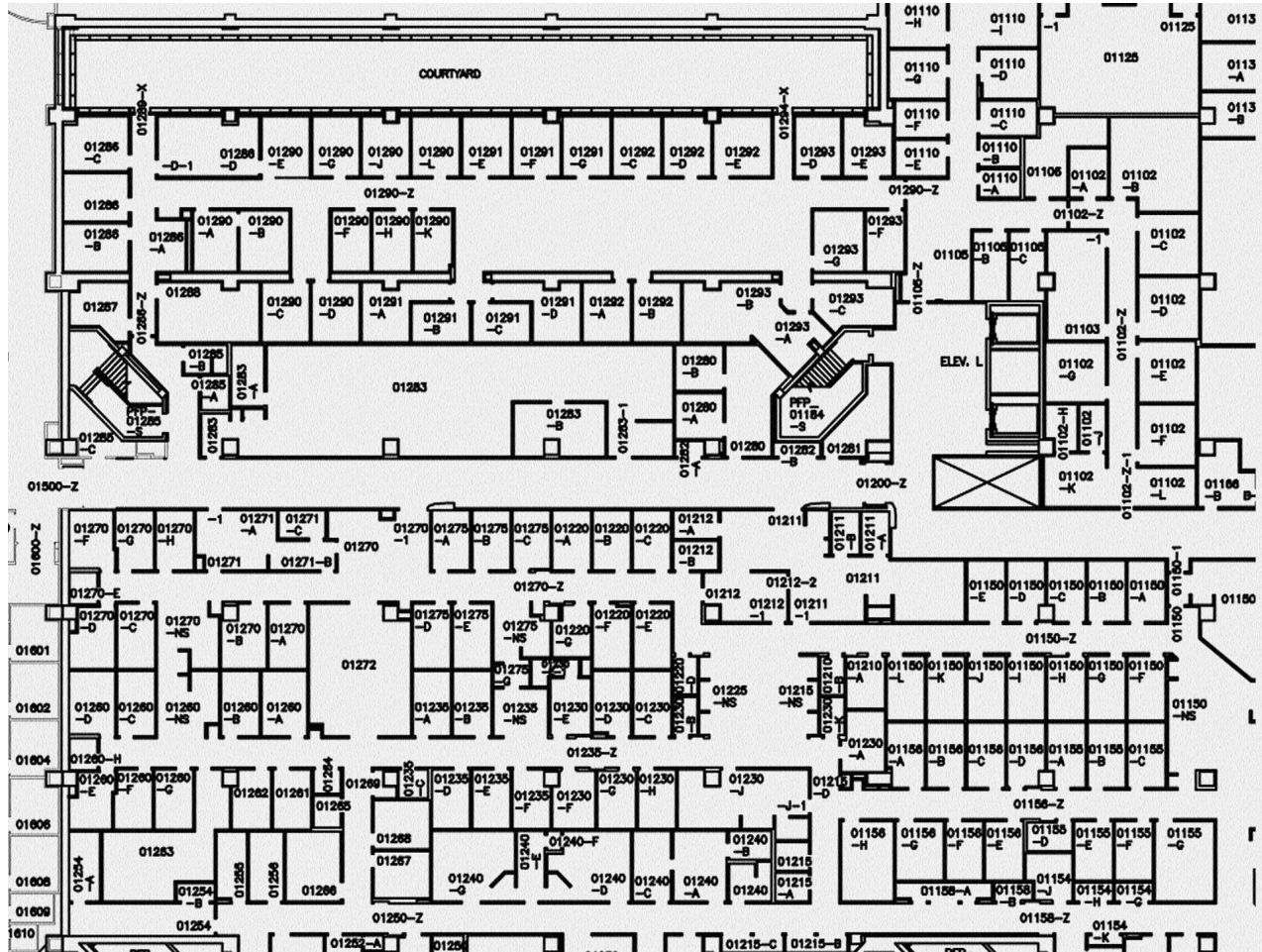
UIHC Model



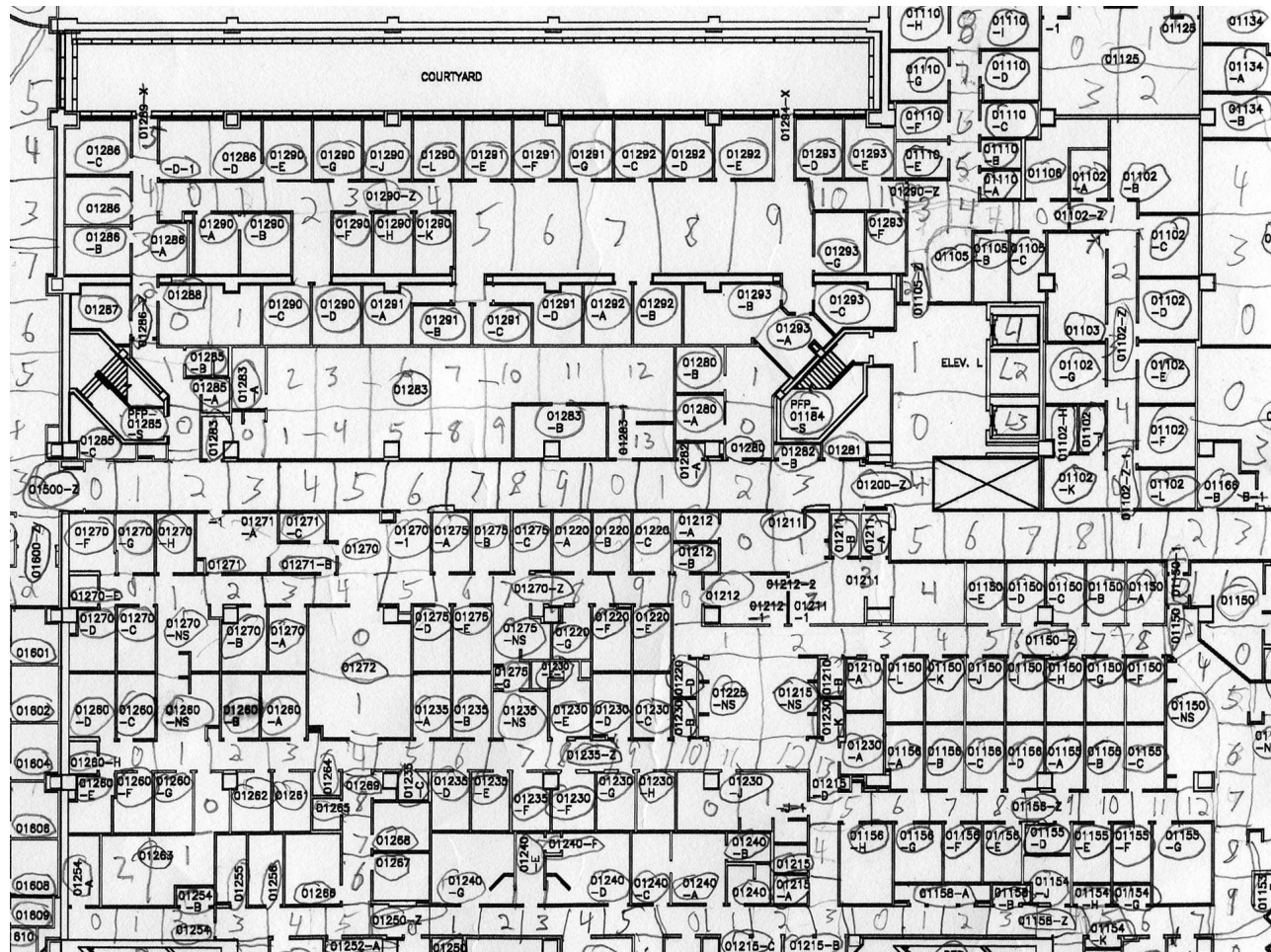
UIHC Model



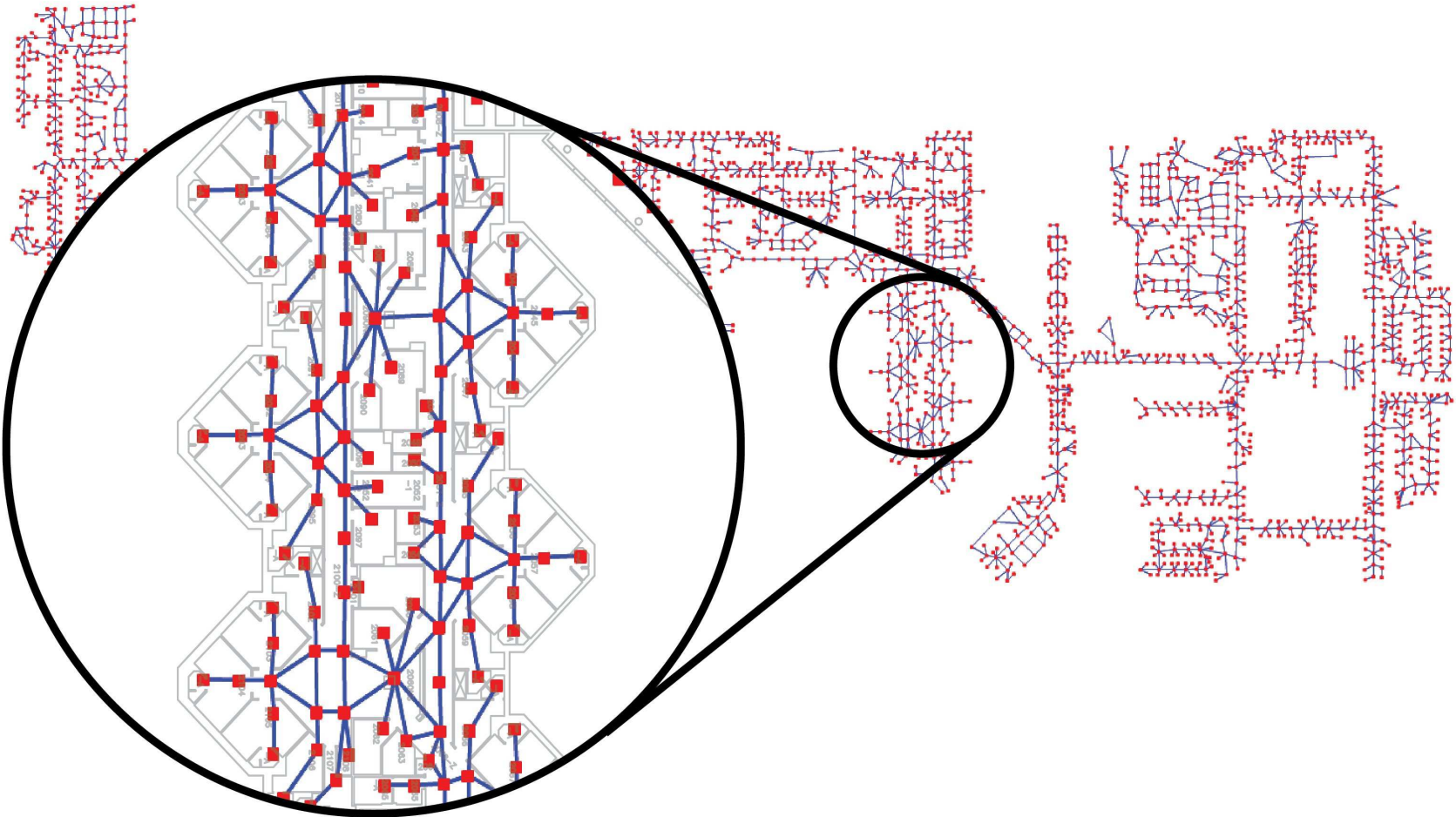
UIHC Model



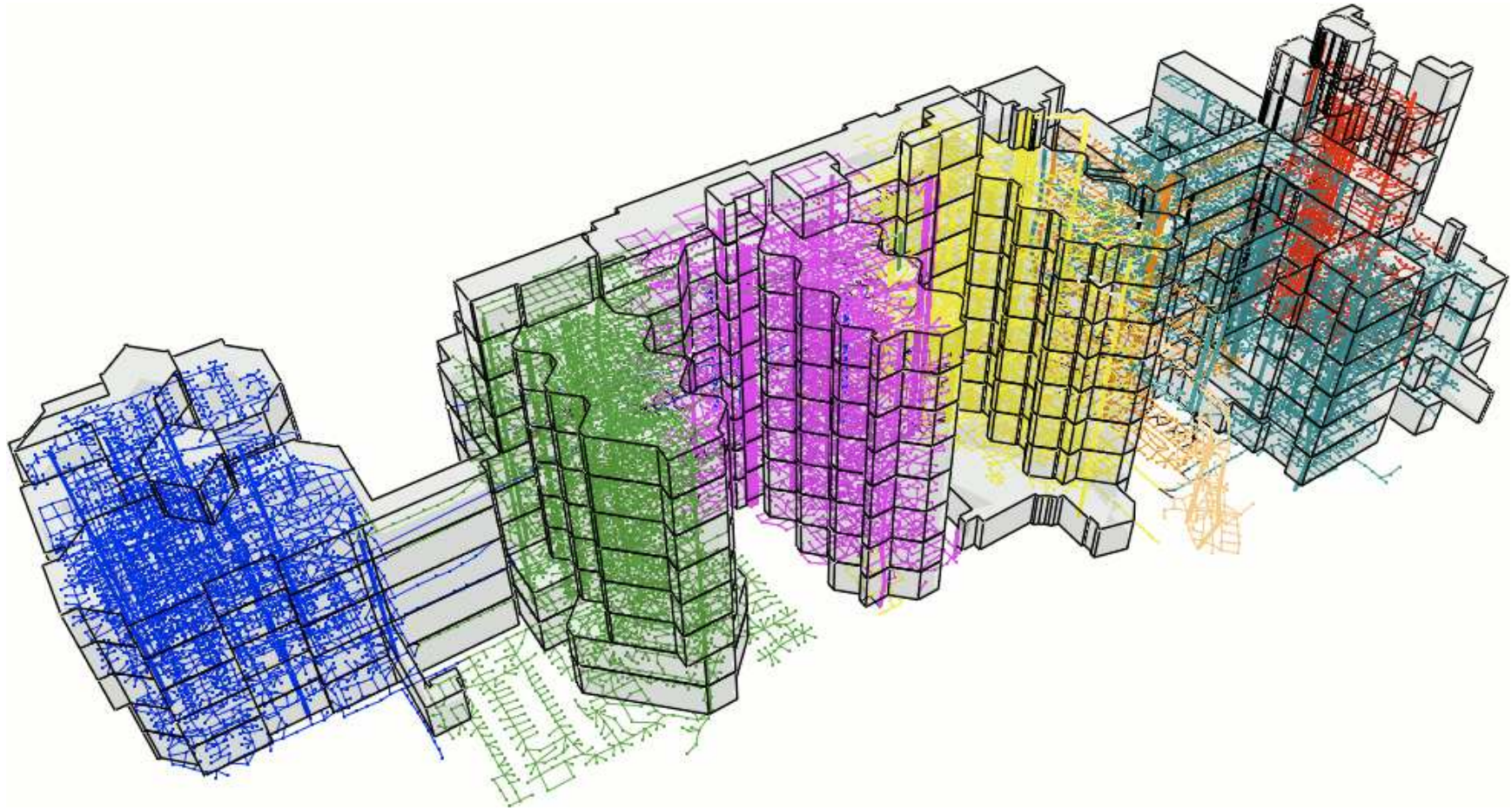
UIHC Model



UIHC Model



UIHC Model



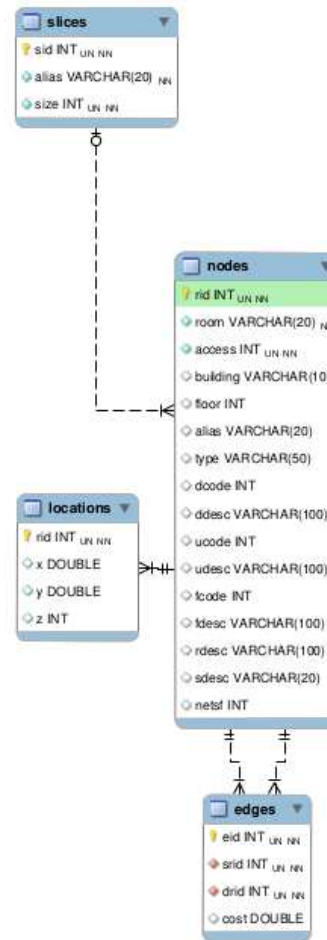
UIHC Physical Model

Final graph contains 19,554 nodes and 23,556 edges.

Precomputed 382,339,362 room-to-room shortest paths.

Provides high-resolution spatial model of proximity and accessibility.

UIHC Physical Model



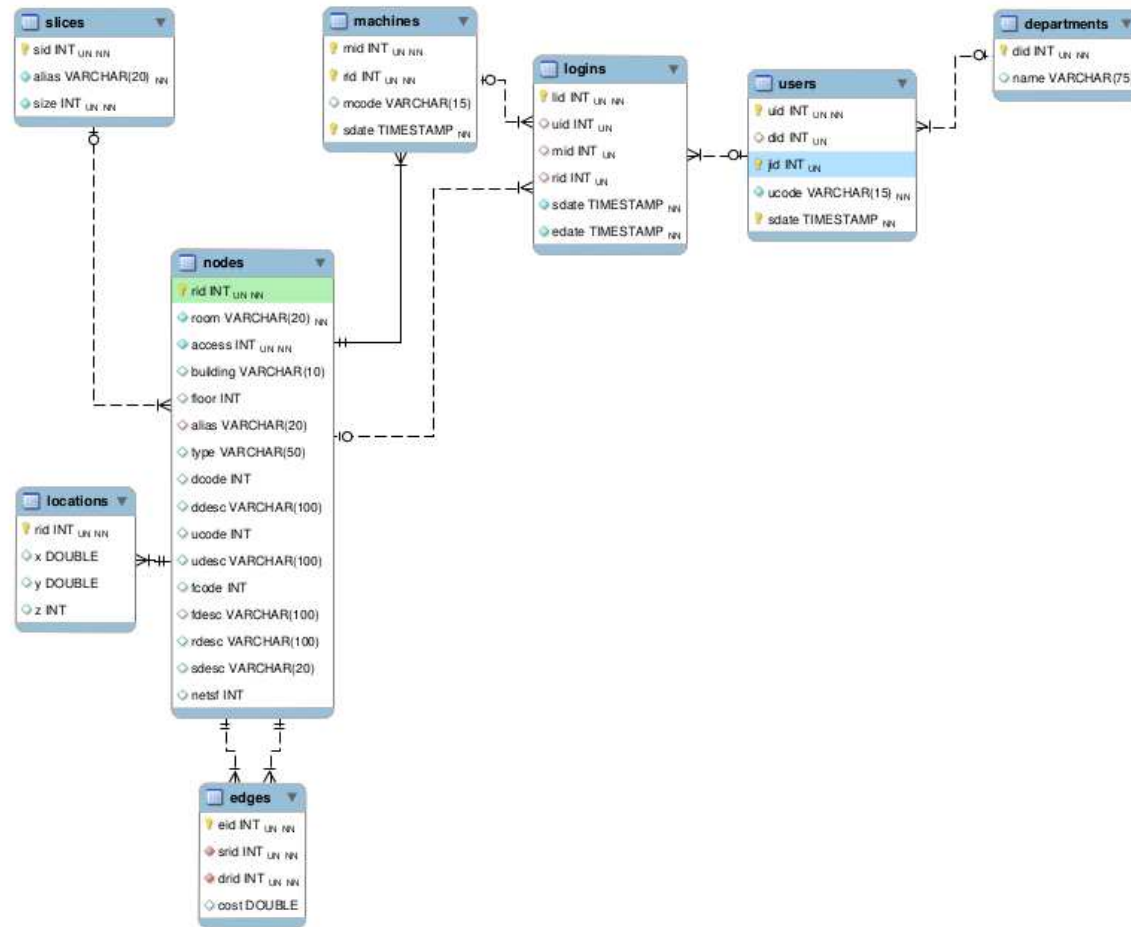
UIHC Login Records

19,800,955 login records between 9/1/2006 and 6/21/2008.

22,996 machines.

29,862 users in 91 departments.

UIHC Login Records



UIHC Connectivity

Precomputed all 359,500,816 shortest paths.

Cost model:

Standard edges 1.0

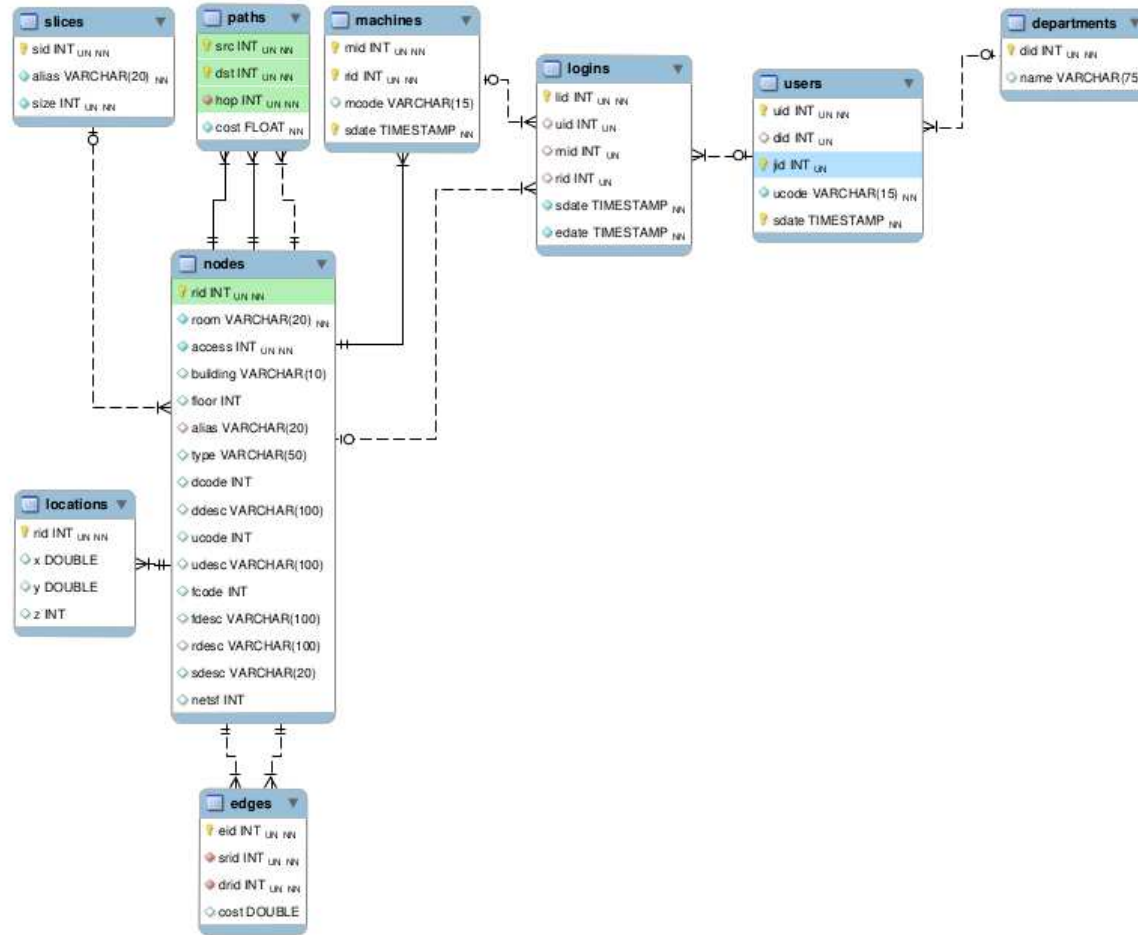
Corridors 0.8

Elevators 5.0

Stair up 4.0

Stair down 3.0

UIHC Connectivity



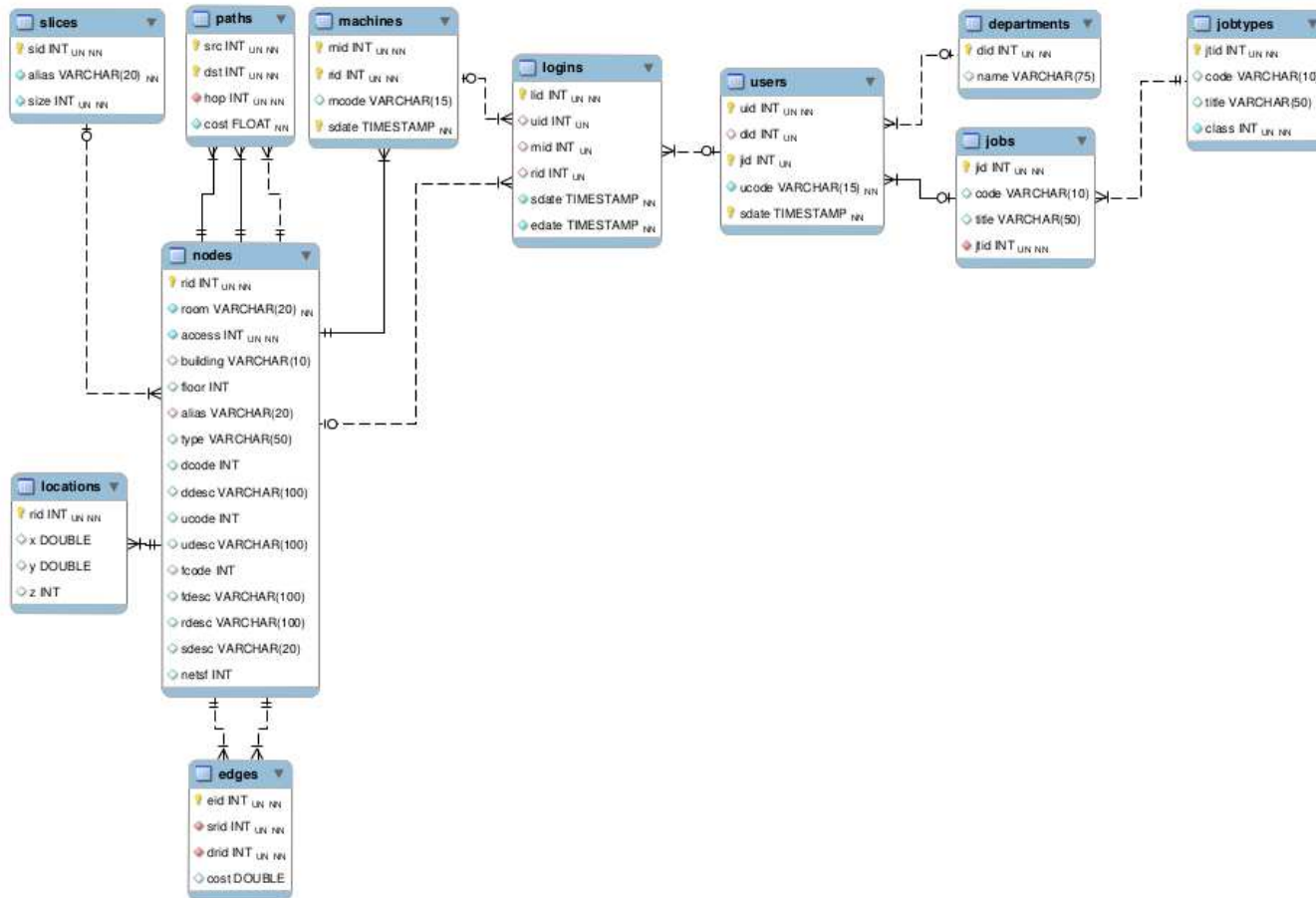
UIHC Human Resource Data

Obtained job categories and job types from HR.

Used to augment original job data from logins.

477 jobs assorted into 36 HR job types.

UIHC Human Resource Data



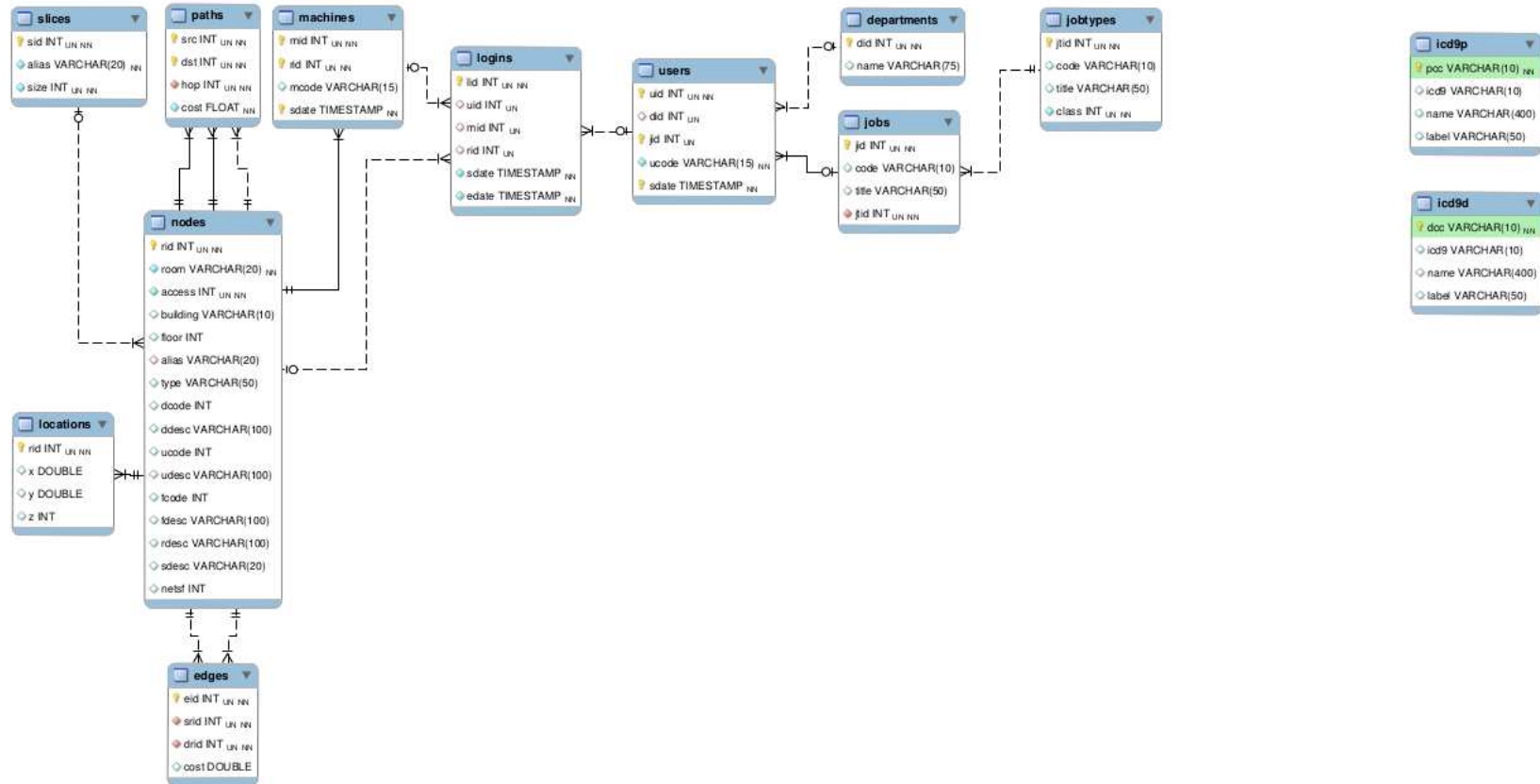
UIHC ICD9 Codes

Obtained ICD9 diagnostic and procedure codes from Medicare.

14,614 ICD9 diagnostic codes.

3,877 ICD9 procedure codes.

UIHC ICD9 Codes



UIHC ADT Data

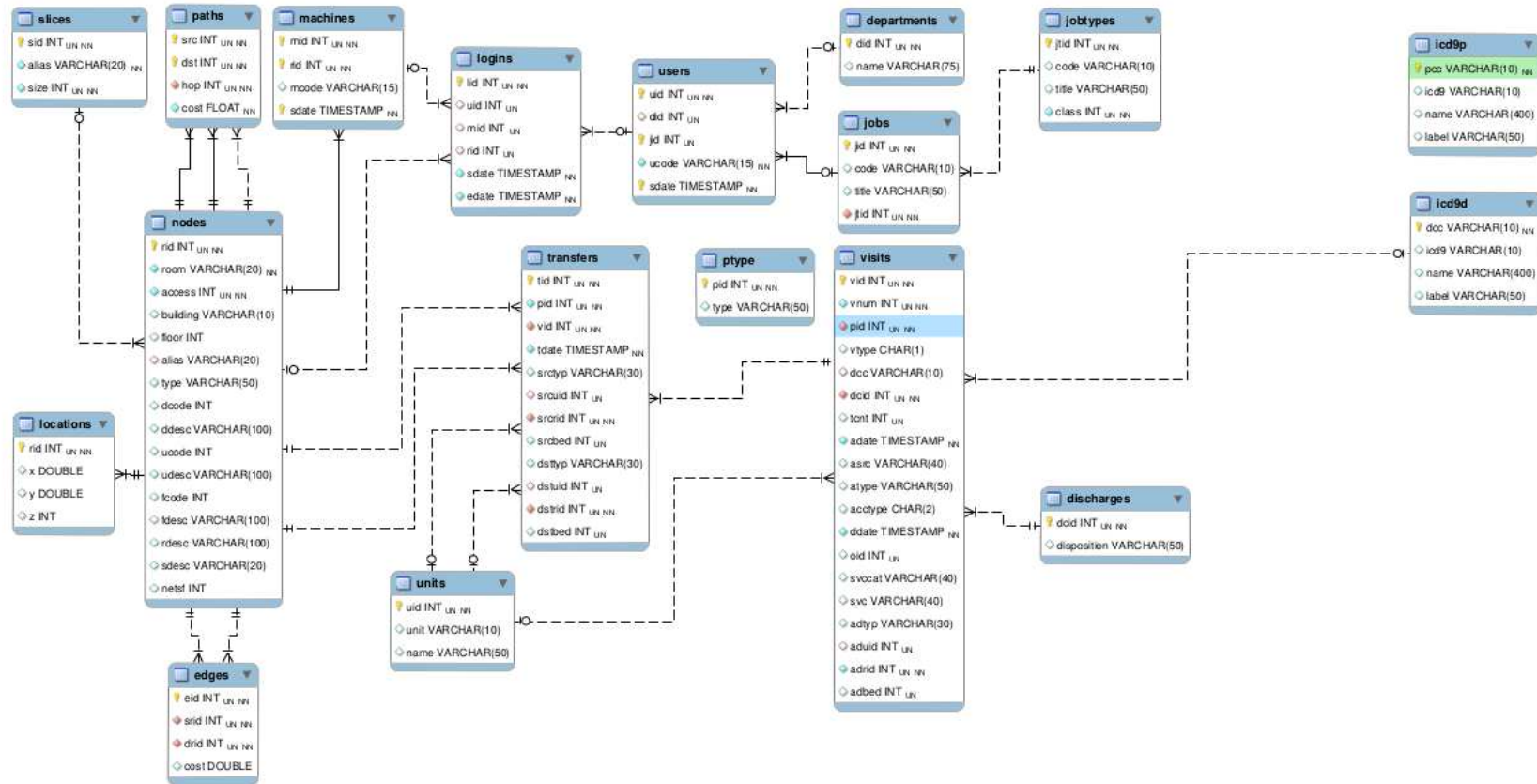
Integrated UIHC admission/discharge/transfer data from 2005-2011.

208,902 inpatient records consisting of 426,155 transfer entries.

Gives best spatial information about where each patient is when.

Some additional information about where they came from, what the diagnosis is, etc.

UIHC ADT Data

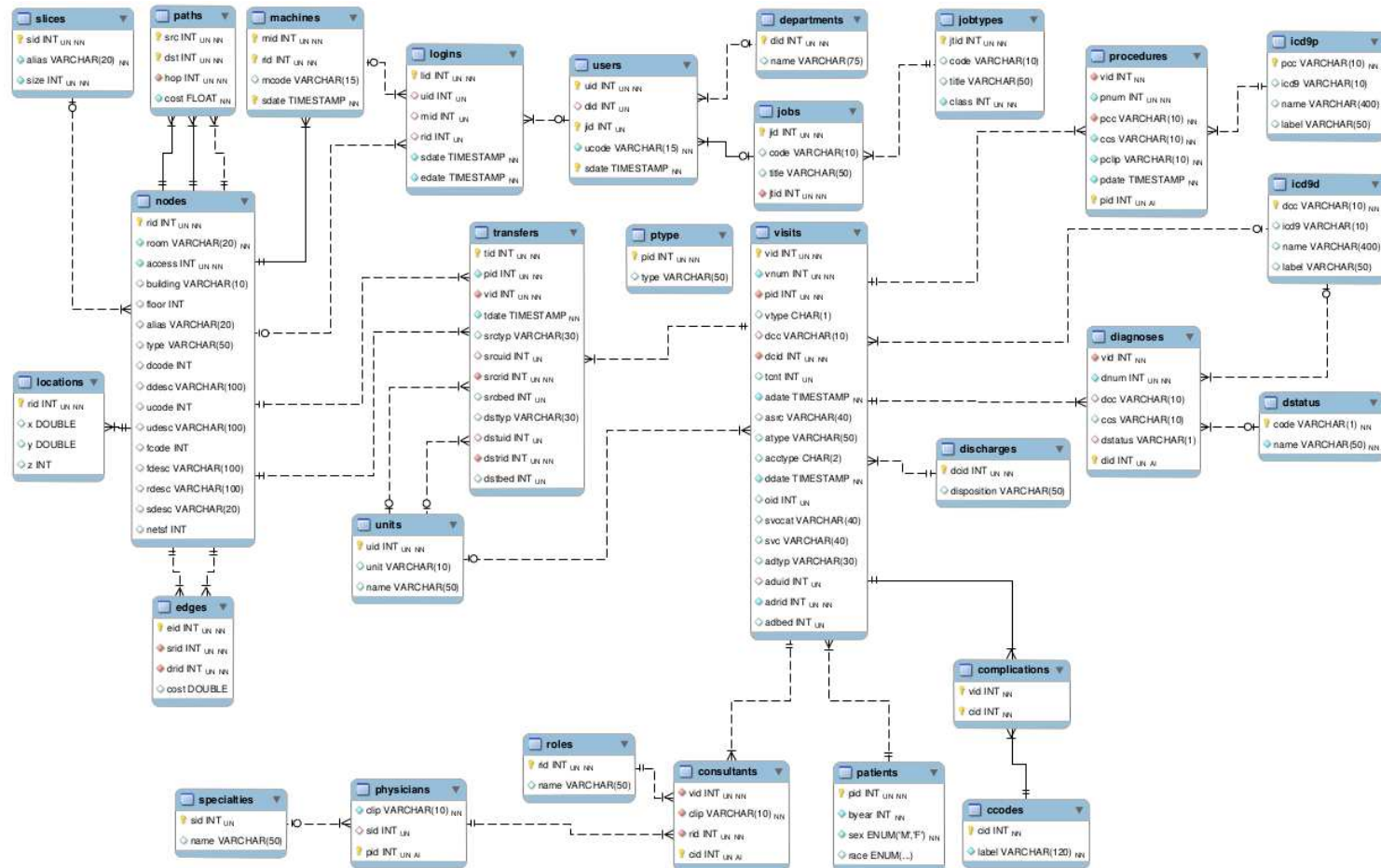


UIHC Quality Data

The quality data contain much richer information about the individual patient's demographics, diagnoses, procedures, physicians, complications, outcomes and so on.

Used to augment the spatial information in ADT data.

UIHC Quality Data



1

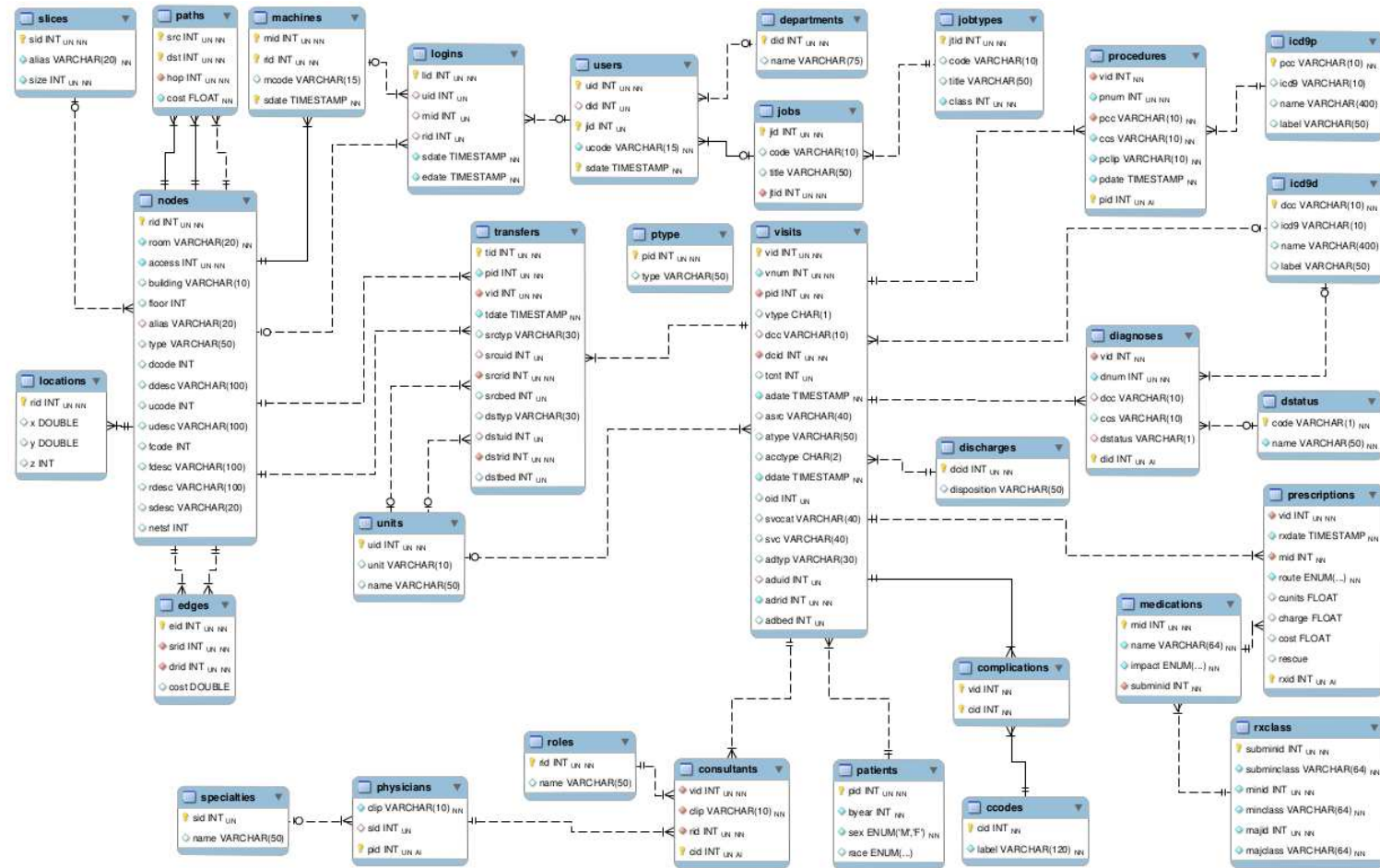
UIHC Pharmacy Data

7,788,703 prescriptions for UIHC patients.

Documents what was prescribed and when/how it was given.

Also contains information about drugs and drug types.

UIHC Pharmacy Data



02/1

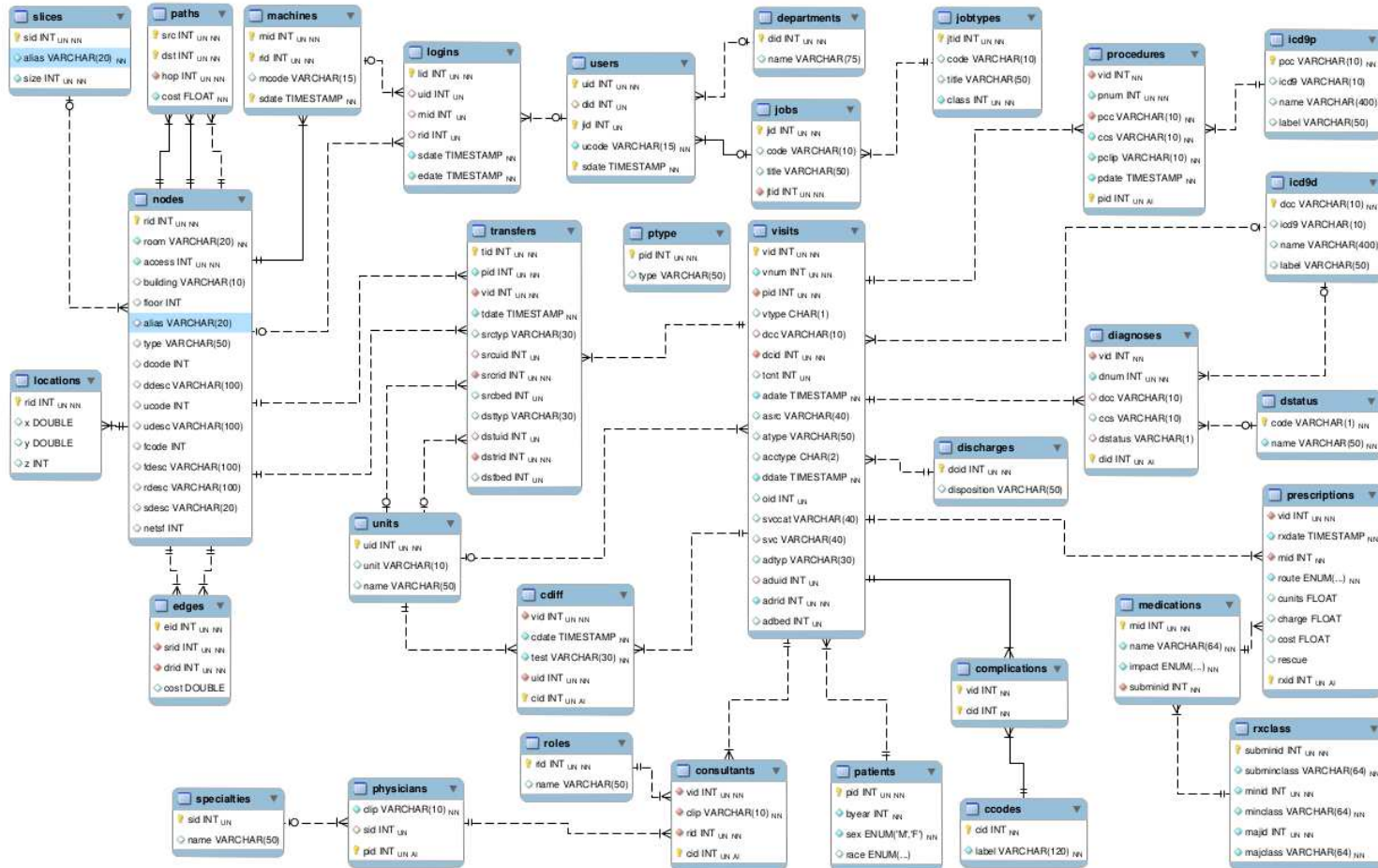
UIHC CDiff Data

Information about CDiff cases at UIHC.

Contains date and time of diagnosis linked to visit.

Also contains which CDiff test was used to confirm diagnosis.

UIHC CDiff Data



1

